



# 7<sup>th</sup> World Junior & Cadet Karate Championships 13-16 October, 2011 Melaka, Malaysia

2<sup>nd</sup> Bulletin



## The Organising Committee:

### **MALAYSIA KARATE FEDERATION**

#### **The Organising Committee of WKF Junior & Cadet 2011**

No 130 – 132 Lorong Haruan 5/5,  
Oakland Commerce Square,  
70300 Seremban,  
Negeri Sembilan,  
Malaysia.

Tel: +606 6331662, 6331662

Fax: +606 6331660

Email: [wkf2011@makaf.net](mailto:wkf2011@makaf.net)



## Message from Chief Minister of Melaka



### CHIEF MINISTER OF MELAKA

Dated : 14<sup>th</sup> Mac, 2011

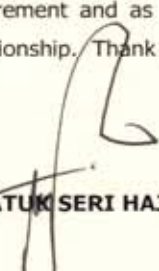
#### MESSAGE FROM THE HONOURABLE CHIEF MINISTER OF MELAKA CUM PRESIDENT OF MALAYSIA KARATE FEDERATION

On behalf of the State Government of Melaka, I am delighted to extend a warm welcome to all competitors, officials and Karate supporters from all over the world to Melaka World Heritage City for attending the 7<sup>th</sup> World Junior and Cadet Karate Championships, the Official Tournament of World Karate Federation.

Starting from this event, one competitor per country can be entered to each weight category in the WKF World Junior and Cadet Karate Championships. We are expecting more than 1000 competitors who will play exciting matches at Melaka International Trade Centre (MITC). We will make the utmost efforts for better organization and great success of the event.

I hope all the competitors have a fantastic competition experience, as well as a fun and enjoyable time during their stay in Melaka. I give you my personal guarantee that these championships will be a truly world-class tournament built on a foundation of integrity and professionalism.

I hope that besides focusing on the Championships, many of you will make time to discover Malaysia's unique blend of rich cultures and traditions, performing arts, exquisite crafts, delectable cuisines and colourful festivals that our visitors find fascinating. Indeed, Malaysia is not only an exciting country to visit, but also an attractive destination for retirement and as a second home. Please accept my best wishes for a successful championship. Thank you.

  
THE HONOURABLE DATUK SERI HAJI MOHD ALI BIN MOHD RUSTAM



## Message from WKF President



It was very good news for all the components of the World Karate Federation the day that the WKF Congress decided to host these 2011 Championships in Malaysia.

The Malaysian Karate Federation already hosted in 1994 the World Senior Championships inside a big success; with this new challenge it is going to become the only National Federation in Asia to have hosted both the Senior and the Junior & Cadet World Championships.

I have visited Melaka early this year and everything is going to be ready in October to host successful World Championships in a beautiful place as Melaka is, and I am sure that the 100 countries from the 5 continents that will join in Melaka will live unforgettable days there.

Our thanks to the President of the Malaysian Karate Federation and Chief Minister of Melaka Yab Datuk Seri Haji Mohd Ali Bin Mohd Rustam for all he is doing for the Federation and for the sport Karate in Malaysia; we also want to extend these thanks to the whole team of the Federation.

During the meetings that the WKF team and the team of the Malaysian Federation have held in order to prepare a successful event, all the components of the WKF team have learnt from a different but equally efficient way of approaching the works, and without any doubt all this is going to serve us for an improved service to this big International Sports Federation as the WKF is.

We all wait impatient for the time to travel to Malaysia and Melaka to come.





## About Melaka

Melaka is one of the states of Malaysia located on the west coast of peninsular Malaysia. It is one of the three states that had achieved the Developed States Status in 2010.



The Capital City for the state is known as the Historical City of Melaka. It will be the host city for the 7<sup>th</sup> World Junior & Cadet Karate Championship, in 2011. Melaka is a historical city with plenty of tourism opportunities. Every year, the city attracts millions of tourists from around the world. Furthermore, the historical City of Melaka has also recently been awarded the status of UNESCO World Heritage City.

For more information on Melaka, please visit the websites below:

1. <http://www.tourism.gov.my/en/destinations/state.asp?state=melaka>
2. <http://www.melaka.gov.my>

### **International Airport**

The nearest international airport to the city of Melaka is the Kuala Lumpur International Airport (KLIA). The city center and the headquarters hotel are approximately 140 kilometers from KLIA by road; or about 1.5 hours traveling time by car.

### **Language**

Malaysia is a multi-racial country. The official language is Bahasa Malaysia. Nevertheless English is a common language in the country and most of the locals understand English.



### **Currency**

The monetary unit of the country is Ringgit Malaysia and is written as RM. Foreign currencies can be exchanged at banks and money changers. The current exchange rates for Ringgit Malaysia to some international currencies are approximately as below:

USD1.00 = RM3.042

CHF 1.00= RM3.274

Euro 1.00= RM4.238

(As at March 14<sup>th</sup>, 2011)

### **Weather**

Malaysia has an equatorial climate, giving it a warm and wet weather. Temperatures in the lowlands range between 29°C - 35°C during the day and 26°C - 29°C at night.

On average, Malaysia receives about 6 hours of sunshine each day with cloud formations occasionally leading to rainfall. There are two monsoon winds that influence the rainfall at different intervals of the year. Melaka is located in a strategic location and is not affected by either of the monsoon winds. Malaysia itself is virtually free of major natural disasters, such as tornadoes, hurricanes, volcanic disruptions and earthquakes, making it a very safe destination. Winds are often light, bringing a gentle cooling effect on the climate.

### **Time Zone**

The difference between MST and GMT is 8 hours (GMT +8)

### **Measurements**

Malaysia follows the international metric measurement system.

### **Electricity**

The voltage in Malaysia is 220 V, 50 Hz. Standard 3- pin square plugs and socket.



### **Do's and Don't**

Malaysia is generally a laid back and relaxed place. However, we do have our own customs and visitors should try to observe these practices when they arrive. Some common courtesies and customs are as follows:

- Some Muslim ladies may acknowledge introductions to gentlemen by merely nodding and smiling. A handshake should only be initiated by ladies. The traditional greeting or *salam* resembles a handshake with both hands but without the grasp. The man offers both hands, lightly touches his friend's outstretched hands, and then brings his hands to his chest to mean, "I greet you from my heart".
- Toasting is not a common practice in Malaysia. The country's large Muslim population does not drink alcohol.
- Shoes must be removed when entering homes and places of worship such as mosques and temples. Some mosques provide robes and scarves for female visitors. Taking photographs at places of worship is usually permitted but always ask permission beforehand.



## THE CHAMPIONSHIP VENUE



The designated Championship venue for the 7<sup>th</sup> WKF Junior & Cadet Championship is Melaka International Trade Center (MITC). MITC is located in the Centre of Ayer Keroh, a satellite township of Melaka City. It is approximately 9 kilometers

from the city centre and the HQ Hotel.

MITC is designed to cater for large international and national events. The facility of MITC is comprised of:

- A large exhibition hall of 13,000 square m<sup>2</sup> with a height clearance of 12 m, complete with air conditioning and 4 organizer offices.



*The Championship Hall*

- A grand ballroom with a capacity of 1400 pax.





- A total of 8 meeting rooms located on Level 1, three of them have movable partitions which can be removed to be used as a large meeting room. Each of the meeting rooms has a dimension of 8.5 m x 17 m with the ceiling heights of 3.6 m.



All the meeting rooms are fully equipped with a wide range of audio-visual, theatrical and lighting systems including ISDN and Internet capabilities.

- An auditorium with a total of 272 seats is located in Level 1. All the meeting rooms are fully equipped with a wide range of audio-visual, theatrical and lighting systems including ISDN and Internet capabilities.
- VIP lounge, a special suite for VIP's and important guests. Fully equipped with home theatre equipment and karaoke audiovisual. Featuring lounge and soft bar area for some light finger food and beverages.
- Parking area able to lodge 76 buses and 1461 cars.



- A Grand Lobby at the Ground Floor of MITC with a surface of 2167.5 m<sup>2</sup>.
- A dedicated media room complete with internet connection, photocopying machine, fax and telephone.
- Orange Café located near the Exhibition Hall B.





## HEADQUARTER & OFFICIAL HOTELS

### **Hotel Equatorial Melaka (The Headquarters Hotel)**

Star rating- 5 stars

Located within the main shopping district and the centre of Melaka, approximately 9 kilometers from the Championship venue.



### **Renaissance Melaka Hotel**

Star rating- 5 stars

Located within the city centre of Melaka, approximately 10 kilometers away from the venue.



### **Holiday Inn**

Star rating- 4 star

Located within the major shopping district and within the city centre of Melaka, approximately 9 km away from the venue.





## **Philea Resort & Spa, Ayer Keroh, Melaka**

Star rating- 5 stars

This is a Luxury resort hotel, located within the Ayer Keroh Satellite town of Melaka, approximately 5 kilometers from the venue.



## **Puteri Resort, Melaka**

Star rating- 3 stars

Located approximately 3 km away from the venue.  
It is a 3 star family resort hotel.



## **Hotel Seri Malaysia, Melaka**

Star rating- 3 stars

Located within the Ayer Keroh town, approximately 4 km away from the venue.





### **MITC Ancasa Hotel, Melaka**

Star rating- 3 stars

Located at the side of the Championship venue.



### **Mahkota Hotel Melaka**

Star rating – 3 stars

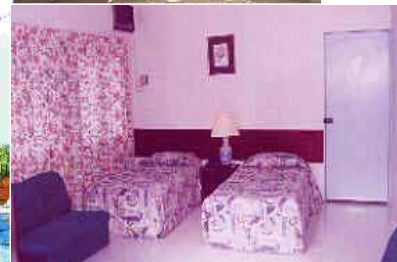
Located in the main shopping area of the city and approximately 9 km away from the venue.



### **D'Village Resort**

Star rating- 3 stars

Located at about 4 kilometres from the Championship venue.







## **Avillon Legacy**

Star rating- 4 stars

Located in the city centre of Melaka, about 10 kilometres from the Championship venue.



## **NAZA Talya Melaka**

Star rating- 3 stars

Located in the city centre of Melaka, about 10 kilometres from the Championship venue.



## **Ayer Keroh Country Resort, Melaka**

Star rating- 2 stars

Located about 3 kilometres from the Championship venue.







## **World Youth Hotel, Ayer**

### **Keroh**

Star rating- 2 stars

This is a brand new hotel. Located about 2 kilometres from the Championship venue.





## Summary:

The quotations above are based on per person per night basis

	HOTEL NAME	Star Rating	Single (RM per head per night)	Double (RM per head per night)	1- Bedroom Apartment (RM per head per night)	2- Bedroom Apartment (RM per head per night)	3- Bedroom Apartment (RM per head per night)
1	Hotel Equatorial (HQ Hotel)	5-star	FULLY BOOKED				
2	Renaissance Melaka Hotel	5-star	420	250			
4	Holiday Inn	4-star	FULLY BOOKED				
5	Philea Resort & Spa, Melaka	5-star Luxurious	545	330			
6	Puteri Resort	3-star	310	180			
7	Hotel Seri Malaysia	3-star	FULLY BOOKED				
8	MITC Ancasa Hotel	3-star	290	160			
9	Mahkota Hotel Melaka	3-star			160	160	150
10	D'village Resort Melaka	3-star		130		130	
11	Avillion Legacy Melaka	4-star	330	200			
12	NAZA Talya Hotel	3-star	290	160			
14	Ayer Keroh Country Resort	2-star	290	160			
15	World Youth Hotel	2-star	290	160			

\*\*\* For any booking applications received after 20<sup>th</sup> Sept, 2011, the room bookings are subject to availability. Kindly be informed that the room rate may be varied.



Note:

- I. All quotations above are net price and include breakfast.
- II. **All prices are quoted in Ringgit Malaysia.** The exchange rate, as at March 4<sup>th</sup>:  
RM1.00 = CHF 0.306, RM1.00= €0.236
- III. Please note that the accommodations for each room type are as follows:  
Single Room – capacity for 1 person maximum.  
Double Room – capacity for 2 persons maximum  
1 bedroom unit – capacity for 2 persons maximum  
2 bedroom unit – capacity for 4 persons maximum  
3 bedroom unit – capacity for 6 persons maximum

**Cancellation Policy:**

- At least 90 days prior to arrival: free of charge  
60 days prior to arrival: 30% of the total booking price  
45 days prior to arrival: 45% of the total booking price  
30 days prior to arrival: 75% of the total booking price  
15 days prior to arrival: 100% of the total booking price

Please be informed that when making changes to your initial reservation, the first change is free of charge, from the second change onwards, the administration fees are RM80.00 per changes. Further, if the amendment involves a room cancellation, the cancellation policy above shall apply.

**Transfer Price:**

The transfer charges between Kuala Lumpur International Airport (KLIA) and the official hotels and vice versa are as follows:  
RM200 per person.



### **Booking Procedures:**

1. Fill in the **Accommodation and Transfer Application Form**, and email it to The Organising Committee of WKF Junior & Cadet 2011.
2. After receiving the application, and verifying your booking reservation, a performance invoice will be emailed to the applicant NF.
3. Upon receiving the performance invoice, the applicant NF shall pay 50% of the total amount within 7 days from the date of invoice, failure in this procedure will cause the booking to be considered null and void.
4. The remaining balance (50% of payment) shall be paid in full before September 20<sup>th</sup>, 2011.
5. For any booking applications received after Sept 20<sup>th</sup>, 2011, upon receiving the performance invoice, the applicant NF shall pay the full amount within 7 days from the date of invoice, failure in this procedure will cause the booking to be considered null and void.

### **Shuttle Bus Services For Championship:**

Shuttle Bus Services will be provided, between Official Hotels and Championship venue, free of charge for all participants who stay in the official hotels.

Note: For those contingents that are not staying in the Official Hotels and wish to use the Shuttle Bus Service .The following rates shall apply:

1. Daily Ticket: RM 80.00 per head per day
2. Four day pass: RM 320.00 per head

**(The ticket will be on sale in the HQ Hotel during registration ONLY.)**





## **Inquiries and Correspondence:**

### **The Organising Secretary of WKF Junior & Cadet 2011**

No 130 -132 Lorong Haruan 5/5,  
Oakland Commerce Square,  
70300 Seremban,  
Negeri Sembilan,  
Malaysia.

Tel: +606 6331662, 6331662

Fax: +606 6331660

Email: [wkf2011@makaf.net](mailto:wkf2011@makaf.net)



## Visa Requirements

### **Countries that require a Visa**

Afghanistan (Visa with reference), Angola, Bangladesh, Bhutan, Burkina Faso, Burundi, Central African Republic, Cameroon, China, Colombia, Comoros, Congo Democratic Republic, Congo Republic, Cote D'ivoire, Djibouti, Equat. Guinea, Eritrea Ethiopia, Ghana, Guinea-Bissau, Hong Kong (C/I or D/I), India, Israel nationals, Liberia, Mali, Mozambique, Myanmar (pasport biasa), Nepal, Niger, Nigeria, Pakistan, Rwanda, Serbia & Montenegro, Sri Lanka, Taiwan, United Nations (Laissez Passer), Western Sahara.

For Israel nationals, visas are required and permission must be granted from the Ministry Of Home Affairs.

For nationals from the Republic of Serbia and the Republic of Montenegro, visas are required without permission granted from the Ministry Of Home Affairs.

For details of VISA application and requirements please contact your nearest Malaysian Representative Office or embassy of Malaysia. For further information please refer to the Immigration Department of Malaysia, website as follows:

<http://www.imi.gov.my/>



## **Other Relevant Information**

### **Registration:**

The registration for all athletes and officials will take place in the HQ, Equatorial Hotel in Room Melaka 6 & 7 on Tuesday 11<sup>th</sup> from 12:00 to 18:00 and Wednesday 12<sup>th</sup> from 9:00 to 12:00.

Each delegation is requested to bring a CD with their national anthem and 2 national flags. The national flags shall not be bigger than 1m x2m.

### **Catering Service at the Sports Hall:**

The lunch vouchers can be pre-purchase from the host at RM50 per head per meal, the food will be served at the Championship venue. For pre-purchase, please fill in form attached (Page 32).

### **Press Accreditation:**

Press accreditation can only be given to persons who apply for such in advance and who are able to prove they are journalists. For Press Accreditation please contact WKF directly.

### **Entrance:**

Entrance to the Championship will be free of Charge

### **Farewell Party:**

Information on farewell party will be provided at the information desk in the HQ hotel during the Championship.



### **Welcome Dinner:**

A Welcome Dinner will be organised by the host. The official invitation and details will be given during the registration in the HQ Hotel. Information on farewell party will be provided at the information desk in the HQ hotel

### **Training Facilities:**

The organiser will provide National Federations with training facilities, from October 8<sup>th</sup> - 12<sup>th</sup>. If requested, transport charges from official hotels to the training facilities shall be charged at RM100.00 per head.

**(Please note that applications for training facilities are fully booked)**

### **Media, TV**

The WKF has all the rights related to the World Karate Championships. This means that only a person with the WKF's permit can take professional photos or videos in the competition. In other words, cameras/video cameras with tripod are prohibited in the sports arena. Should you need more information about press or media related issues, please contact the World Karate Federation's office.

### **Insurance:**

All participants and members of delegations must have their own medical insurance and personal trip insurance. The Malaysia Karate Federation and the World Karate Federation are taking **no liability** for either of these. Note that plain medical insurance is not enough, but the insurance has to have e.g. **repatriation option**. For further information please see the **Competition Rules Articles**.

The chiefs of delegation have to sign the enclosed term of responsibility and return it by June 30<sup>th</sup>, 2011.





## WKF APPROVED ITEMS

All protections of compulsory use are the ones approved by WKF:

TRADEMARK	OFFICIAL DISTRIBUTOR
	<b>DOUBLE D</b> 2, rue Vladimir Jankelevitch 77184 Emerainville France Phone : +33 1 64 73 00 03 Fax : + 33 1 64 73 00 04 E-mail : <a href="mailto:thierry.doubled@wanadoo.fr">thierry.doubled@wanadoo.fr</a>
	<b>ARAWAZA</b> 724, Chemin des Anglais Mascouche (QC) J7L 3R6 Canada Phone: + 1 450 477 4410 Fax: +1 450 477 4400 E-mail: <a href="mailto:info@arawaza.com">info@arawaza.com</a>
	<b>BUDOLAND</b> Oberaustasse 45 D-83026 Rosenheim Germany Phone: + 49 8031 4 06 740 Fax: +49 8031 4 06 74 11 E-mail: <a href="mailto:info@budoland.de">info@budoland.de</a>
	<b>SPORTS MASTER ATHLETICS INT.</b> 105-119 Jardine St Fairy Meadow NSW 2519 Australia Phone: + 61 2 4283 4363 Fax: 61 2 4285 5512 E-mail: <a href="mailto:sales@sports-master.com">sales@sports-master.com</a>
	<b>TOKAIDO</b> Kojimachi KY Bldg., 3-12-4 Chiyoda-Ku 102 Tokyo Japan Phone: +81 3 3262 02 81 Fax: +81 3 3234 93 87 E-mail: <a href="mailto:tokaodo@par.odn.ne.jp">tokaodo@par.odn.ne.jp</a>

*Important: The use of the WKF Face Mask is compulsory for Kumite Cadet Categories (male & female). The use of the WKF Body Protector is compulsory for all age categories, this is, Kumite Cadet, Junior and Senior Categories (male & female). It can be purchased from the distributors of the five WKF approved companies, whose details can be found at WKF web site [www.wkf.net](http://www.wkf.net), clicking on the banner of the Face Mask and Body Protector that appears on the right side of the home page at WKF web site.*





## 7<sup>th</sup> WORLD JUNIOR & CADET KARATE CHAMPIONSHIPS REFEREE COURSE & COACH PROGRAMME

Venue: Hotel Equatorial

Friday 07/10/11	16:00 - 19:30				
	Kata & Kumite Registration  Room: Melaka 4+5				
Saturday 08/10/11	09:30 - 11:15	11:15 - 11:45	11:45 - 13:00	13:00 - 14:30	14:30 - 18:00
	Kumite Lecture  Room: Melaka 1	Cofee Break	Theory Examination  Room: Melaka 1	Lunch	Kumite Group 1  Room: Melaka 1
Sunday 09/10/11	09:00 - 13:00	13:00 - 14:30	14:30 - 18:00	18:30 - 20:00	
	Kumite Group 2  Room: Melaka 1	Lunch	Kumite Group 3  Room: Melaka 1	Kata Registration*  Room: Melaka 4+5	
Monday 10/10/11	09:00 - 13:00	13:00 - 14:30	14:30 - 15:30	16:00 - 17:00	
	Kumite Group 4  Room: Melaka 1	Lunch	Kata Lecture  Room: Melaka 1	Theory Examination (Referee)  <b>Examination for Certified Kata &amp; Kumite Coach</b> Room: Melaka 1	
Tuesday 11/10/11	09:00 - 13:00	13:00 - 14:30	14:30 - 18:00		
	Kata Group 1  Room: Melaka 1	Lunch	Kata Group 2  Room: Melaka 1		
Wednesday 12/10/11	09:00 - 13:00	16:00 - 17:00	17:00 - 18:00	18:30 - 19:30	20:00 - 20:30
	RC Administration  Room: Melaka 1	Examination Result  Room: Melaka 1	License Renewal  Room: Melaka 1	Referees Briefing  Room: Melaka 1	MACs Briefing  Room: Melaka 5

\* This second kata registration is for those who are only attending the kata examination.



## 7<sup>th</sup> WORLD JUNIOR & CADET KARATE CHAMPIONSHIPS EVENT PROGRAMME

<b>DATES</b>	<b>TIME</b>	<b>EVENTS</b>
Tuesday 11/10/11	<b>12:00 – 18:00</b>	<b>Registration for delegations, (Room: Melaka 6&amp;7) HQ Hotel</b>
	14:00 – 16:00	Technical Commission Meeting, (Room: Melaka 3) HQ Hotel
	17:00 – 19:00	Sport Commission Meeting, (Room: Melaka 3) HQ Hotel
Wednesday 12/10/11	<b>09:00 – 12:00</b>	<b>Registration for delegations, (Room: Melaka 6&amp;7) HQ Hotel</b>
	9:00 – 12:00	Executive Committee meeting, (Room: Melaka 4&5) HQ Hotel
	10:00 – 11:00	Medical Commission meeting , (Room: Melaka 3) HQ Hotel
	11:00 -12:00	Anti-Doping Commission meeting, (Room: Melaka 3) HQ Hotel
	<b>19:30 – 20:30</b>	<b>Briefing for Coaches Accreditation, (Melaka 1) HQ Hotel</b>
	20:30	<b>Draw and Information for Coaches, (Melaka 1) HQ Hotel</b>

<b>Thursday 13/10/11</b>	<b>8:00 – 9:30</b>	<b>WORKING BREAKFAST</b> offered by the WKF President for the NF's Presidents, the WKF – EC and the Directors of the WKF Commissions	<b>(Phoenix Ballroom) HQ Hotel</b>
------------------------------	--------------------	--	--



**IMPORTANT:** Please be informed that it is compulsory for all coaches who wish to participate in the Championships to attend the Briefing for Coaches Accreditation.

\* Please be also informed that only those coaches who obtain the Accreditation at the Youth Camp in Greece next July will be able to access to the Certified Kata Coach and Certified Kumite Coach Accreditations. For further information on this issue, please be so kind to download the Youth Camp's bulletin from WKF website ([www.wkf.net](http://www.wkf.net)), where some more detailed information concerning this first activity for Coaches Accreditation can be found.





# 7th WKF JUNIOR & CADET CHAMPIONSHIPS

## 2<sup>nd</sup> UNDER-21 WKF CUP

13-16 October 2011 – Melaka (Malaysia)

Thursday, 13<sup>th</sup> October 2011

(Sport hall) Weigh- in under – 21  
 09:00 – 10:00 Male -68, -78, +78 kg.  
 10:30 – 11:30 Female -53, -60, +60 Kg.

INDIVIDUAL UNDER -21 PROGRAMME	
09:00 – 11:15	Eliminations &Repechages Male & Female (Individual) Kata
11:15 – 13:30	Eliminations &Repechages Male ( -68, -78 Kg )
13:30 – 15:00	Eliminations &Repechages Female (-53, +60 Kg)
<b>15:00 – 17:00</b>	<b>Opening Ceremony</b>
17:00 – 18:30	Eliminations &Repechages Male ( +78 ) Female (-60 Kg)
18:30 – 18:45	FinalKata Male &Female
18:45 – 19:00	Medals Award
19:00 – 19:15	Final Male -68, -78 Kg.
19:15 – 19:30	Medals Award
19:30 – 19:45	Final Female -53 Kg, -60 Kg.
19:45 – 20:00	Medals Award
20:00 – 20:15	Final Female +60 Kg, Male +78 Kg.
20:15 – 20:30	Medals Award



-

**Friday, 14<sup>th</sup> October 2011**

**(Sport hall ) Weigh- in Junior**  
**10:00 – 11:00 Male -55,-61,-68 -76,+76 Kg.**  
**11:30 – 12:30 Female -48, -53, -59, +59 Kg.**

<b>JUNIOR INDIVIDUAL PROGRAMME</b>	
10:00 – 12:15	Eliminations & Repechages Male & Female <b>(Individual)</b> Kata
12:15 – 14:15	Eliminations & Repechages Male Kumite (-55, -61 Kg)
14:15 – 15:45	Eliminations & Repechages Female Kumite (-48, -53 Kg)
15:45 – 18:15	Eliminations & Repechages Male Kumite (-68, -76 Kg)
18:15 – 18:30	Final Male & Female <b>(Individual)</b> Kata
18:30 – 18:45	Medals Award
18:45 – 19:00	Final Male Kumite (-55, -61 Kg)
19:00 – 19:15	Medals Award
19:15 – 19:30	Final Female Kumite (-48 , -53 Kg)
19:30 – 19:45	Medals Award
19:45 – 20:00	Final Male Kumite (-68 , -76 Kg)
20:00 – 20:15	Medals Award



**Saturday, 15<sup>th</sup> October 2011**

( Sport hall )      Weigh- in    Cadet  
10:00 – 11:00      Male    -52, -57, -63, -70, +70 Kg.  
11:30 – 12:30      Female -47, -54, +54 Kg.

<b>CADET &amp; JUNIOR INDIVIDUAL PROGRAMME</b>	
10:00 – 12:15	Eliminations & Repechages Cadet Kata Male & Female
12:15 – 13:45	Eliminations & Repechages Junior Female (-59, +59 Kg )
13:45 – 14:45	Eliminations & Repechages Junior Male (+ 76)
14:45 – 16:30	Eliminations & Repechages Cadet Male (-52, -57 Kg )
16:30 – 18:15	Eliminations & Repechages Cadet Female (-47, -54 Kg )
18:15 – 18:30	Final Cadet Kata Male & Female
18:30 – 18:45	Medals Award
18:45 – 19:00	Final Junior Female ( -59, +59 Kg ) & Male (+76 Kg )
19:00 – 19:15	Medals Award
19:15 – 19:30	Final Cadet Male ( -52, -57 Kg )
19:30 – 19:45	Medals Award
19:45 – 20:00	Final Cadet Female ( -47, -54 Kg )
20:00 – 20:15	Medals Award



**Sunday, 16<sup>th</sup> October 2011**

<b>CADET INDIVIDUAL &amp; JUNIOR TEAM PROGRAMME</b>	
10:00 – 11:30	Eliminations & Repechages Kata Team Male & Female
11:30 – 13:30	Eliminations & Repechages Cadet Male (-63, -70 Kg)
13:30 – 15:15	Eliminat. & Repech. Cadet Male (+70 ) & Female (+54 Kg)
15:15 – 15:30	Final Cadet Male (-63, -70 Kg)
15:30 – 15:45	Medals Award
15:45 – 16:00	Final Cadet Female ( +54 ) & Male ( + 70 Kg )
16:00 – 16:15	Medals Award
16:15 – 16:30	Final Junior Kata Team Female & Male
16:30 – 16:45	Medals Award
17:00	Closing Ceremony

The above program has been scheduled according to the estimated participation. It will be revised once the actual participation and installation sizes are known. The final program will be provided during the Delegates Meeting along with the competition draw.



# WORLD KARATE FEDERATION

Recognized by the International Olympic Committee (IOC)  
Member of SportAccord and of the International World Games Association (IWGA)

## WKF FEES AND CONDITIONS FROM 1 -1- 2011

### 1. Annual membership fee ..... 1300 CHF

The deadline for membership fee payment is 31<sup>st</sup> March, each year. If the payment is made after the deadline, but in the same year, a surcharge of 300 CHF will be applied. If the payment is made the year after, a surcharge of 500 CHF will be applied. In any case the annual and/or outstanding membership fees must be paid prior to registration of participants at World Championships events.

### 2. Referee course registration fees and conditions

2.a. Indistinctly Kata or Kumite (includes the issue of an annual WKF ID card) ..... 330 CHF

2.b. Both Kata and Kumite (includes the issue of an annual WKF ID card)..... 530 CHF

The deadline for registration is 60 days before the 1<sup>st</sup> day of the referee course. For late registration cases, acceptance will be subject to places being available and a surcharge of 250 CHF for each single late registration (Kata or Kumite) and of 400 CHF for each double late registration (Kata and Kumite) will be applied. As there is limited capacity for the total number of participants in the referee course, each National Federation will have to rank its candidates by priority order. At least 45 days before the day of commencement of the course, the WKF will inform each National Federation of the number of candidates accepted, following the priority order indicated by the National Federation. Should this priority order not be given, then the WKF will take the decision as to which candidates will be accepted.

### 3. Referee license renewal fee (indistinctly Kata or Kumite) ..... 200 CHF

### 4. Referees registration fees for World Championships

The registration of qualified referees for officiating in World Championships will be free of charge when done within the same deadline as for the referee course registration (60 days before the 1<sup>st</sup> day of the referee course). For late registration a surcharge of 250 CHF will be applied. All referees registered shall be in possession of an annual WKF ID card or otherwise be issued and pay for one (30 CHF).

### 5. Registration fees in World Championships

#### 5.1 World Championships (Cadet & Junior/Senior) fees for each entry, as follows:

- Male kumite team..... 180 CHF
- Female kumite team..... 140 CHF
- Male kata team ..... 120 CHF
- Female kata team..... 120 CHF
- Each individual entry..... 110 CHF

The individual entry fee includes the issue of an annual WKF ID Card. Those athletes only registered for team events need to be issued and pay for an annual ID card (30 CHF).

For late registration (the deadline for registration is 2 weeks before the 1<sup>st</sup> day of the competition) a surcharge of 60 CHF will be applied for each individual entry and of 100 CHF for each team. The same surcharge will have to be paid for entry changes even if they were registered on time including delegation members other than competitors.

6. WKF ID cards: All participants (Athletes, Referees, Coaches, Heads of Delegation, Country VIP's, Medical and Physio persons, NF invited persons and NF accompanying persons) accredited in a WKF event shall be in possession of an annual WKF ID card.

### 7. Protest fee in World Championships..... 400 CHF

### 8. Surety fee for the organisation of a World Championship..... 40000 CHF





### Term of Responsibility

To be filled, signed and returned by **June 30<sup>th</sup>, 2011**

I,----- the undersigned, as the chief of Delegation of my country, duly enrolled to participate in the 7<sup>th</sup> World Junior and Cadet Karate Championships, which will be held in Melaka, Malaysia from October 13-16, 2011, with full knowledge of the Statues, the Rules and the Norms of the WORLD KARATE FEDERATION, pledge myself to faithfully accomplish the regulations of this before mentioned entity, and I take any and all administrative, civil and criminal responsibilities for whatever happens to our athletes, coaches and other members of our delegation participating in this championship, before, during and after the competition, such as physical injuries, personal expenses, or monetary debts and casual material damages to the hotels, the venue, means of transportation, etc. Furthermore, I exempt from any legal, civil or criminal responsibilities the organizers of the Championships, the WKF and the Malaysia Karate Federation, its directors, as well as any person, company, or entity related to the event (sponsors, public and private entities). I authorize the organizers of the event to use images, photos and the names of our competitors and other members of our delegation (since it is considered necessary) for the sport activities and publications of karate, related to the event, without any monetary compensation.

Country/Nation :	
Surname, First name:	
Passport number & expiry date:	
Credit card details & expiry date:	
Position in the federation:	
Address:	
Tel.-no.:	
Fax & email:	

**Fill in, stamp, sign and send to:**

**Malaysia Karate Federation**  
**The Organising Committee of WKF Junior & Cadet 2011**  
 No 130 -132 Lorong Haruan 5/5,  
 Oakland Commerce Square,  
 70300 Seremban,  
 Negeri Sembilan,  
 Malaysia.

**Signature & Stamp:**

Tel: +606 6331662, 6331662  
 Fax: +606 6331660  
 Email: wkf2011@makaf.net



# Training Facility Booking Form

NATIONAL FEDERATIONS:					
HOTEL:					
CONTACT PERSON:					
TRANSPORT REQUIREMENT: <span style="float: right;">Please answer Yes or No</span>					
NUMBER OF PERSON FOR TRAINING:					
	8 <sup>th</sup> OCT	9 <sup>th</sup> OCT	10 <sup>th</sup> OCT	11 <sup>th</sup> OCT	12 <sup>th</sup> OCT
8am-10am					
10am-12pm					
12pm-2pm					
2pm-4pm					
4pm-6pm					
6pm-8pm					

**Fully Booked**



# Accommodations & Transfer Application Form

## NATIONAL FEDERATION INFORMATION

NAME OF FEDERATION:		COUNTRY:
ADDRESS:		
PHONE:	EMAIL 1:	
FAX:	EMAIL 2:	
NAME / SURNAME OF CONTACT PERSON:		
POSITION IN NATIONAL FEDERATION / DELEGATION:		

## INVOICE DETAILS

NAME:		COUNTRY:
ADDRESS:		
PHONE:	EMAIL 1:	
FAX:	EMAIL 2:	



### TRAVEL DETAILS

	ARRIVAL	DEPARTURE
<b>GROUP 1</b>	DATE:	DATE:
	ESTIMATED TIME OF ARRIVAL:	ESTIMATED TIME OF DEPARTURE:
	FLIGHT NO.:	FLIGHT NO.:
	NUMBER OF PERSONS:	NUMBER OF PERSONS:
	TRANSFER KLIA TO HOTEL: YES / NO	TRANSFER HOTEL TO KLIA: YES / NO
<b>GROUP 2</b>	DATE:	DATE:
	ESTIMATED TIME OF ARRIVAL:	ESTIMATED TIME OF DEPARTURE:
	FLIGHT NO.:	FLIGHT NO.:
	NUMBER OF PERSONS:	NUMBER OF PERSONS:
	TRANSFER KLIA TO HOTEL: YES / NO	TRANSFER HOTEL TO KLIA: YES / NO



# Hotel Booking

	HOTELS	CHECK-IN	CHECK-OUT	SINGLE ROOM	TWINS ROOM	1 BEDROOM UNIT	2 BEDROOM UNIT	3 BEDROOM UNIT
GROUP 1	Hotel Equatorial	<b>Fully Booked</b>						
	Renaissance Melaka Hotel							
	Holiday Inn	<b>Fully Booked</b>						
	Philea Resort & Spa, Melaka							
	Puteri Resort							
	Hotel Seri Malaysia	<b>Fully Booked</b>						
	MITC Ancasa Hotel							
	Mahkota Hotel Melaka							
	D'village Resort Melaka							
	Avillion Legacy Melaka							
	NAZA Talya Hotel							
	Ayer Keroh Country Resort							
	World Youth Hotel							
		HOTELS	CHECK-IN	CHECK-OUT	SINGLE ROOM	TWINS ROOM	1 BEDROOM UNIT	2 BEDROOM UNIT
GROUP 2	Hotel Equatorial	<b>Fully Booked</b>						
	Renaissance Melaka Hotel							
	Bayview Hotel Melaka							
	Holiday Inn	<b>Fully Booked</b>						
	Philea Resort & Spa, Melaka							
	Puteri Resort							
	Hotel Seri Malaysia	<b>Fully Booked</b>						
	MITC Ancasa Hotel							
	Mahkota Hotel Melaka							
	D'village Resort Melaka							
	Avillion Legacy Melaka							
	NAZA Talya Hotel							
	Ayer Keroh Country Resort							
	World Youth Hotel							

Number of lunches: \_\_\_\_\_



Lunch Voucher (please state total unit of lunch vouchers needed), **RM50.00** per head per meal:

Note:

1. Please note our cancellation policy, and booking procedures (page 16 -17).
2. All booking will be on a first paid first serve basis.
3. Please sign and stamp at the end of this form and email it back by **June 30<sup>th</sup>, 2011**, to:

**The Organising Committee of WKF Junior & Cadet 2011**

No 130 -132 Lorong Haruan 5/5,  
Oakland Commerce Square,  
70300 Seremban,  
Negeri Sembilan,  
Malaysia.

Tel: +606 6331663, 6331662

Fax: +606 6331660

Email: wkf2011@makaf.net

**Signature & Stamp:**